



**The Øresund
region – will grow
from two to three
countries when the
Fehmarn Belt
tunnel opens in
2029**

Johan Wessman
17 oktober 2023

118

members in Sweden and Denmark



Analyses



Networking events
- digital and in person



News agency

AN INDEPENDENT DANISH-SWEDISH KNOWLEDGE CENTRE

A dense urban region between two countries

A capital city on the border

Unique border region with Denmark's capital on one side of the border and Sweden's third largest city on the other

4.2 million inhabitants

The largest metropolitan region in the Nordic region in terms of population

Skåne has a Danish history

Skåne was part of Denmark until 1658. Since then, it has been a part of Sweden



The Øresund Bridge

Opened on 1 July 2000

Commuting Sweden – Denmark
across the Øresund Strait
(bridge Copenhagen - Malmö + ferry Elsinore - Helsingborg)

- Commuters before the bridge:
2,800 (1999)
- After the bridge:
16,900 (2021)



INFRASTRUCTURE HAS AN IMPACT



The Øresund Bridge in the south and the Øresund Line ferries in the north.

Side effects from the construction of the Øresund Bridge

100

Head offices have been established in Malmö since 2000

Medicon Valley

The strongest life science cluster in the Nordic region

Business across the strait

Swedish property companies continue to invest in Denmark. Own properties worth SEK 150 billion in Denmark

Train from Sweden to CPH

Zealand
(Denmark)



Metro



Ørestad
- a new district



Scania
(Sweden)



European Spallation Source



City Tunnel

Hyllie
- a new district



16,900

Øresund commuters (2021), > 90% live in Sweden



90,000

Passenger journeys across Øresund every day via bridge or ferry (2022))

13

Universities and branches in the Öresund region - 2 Noble Prizes 2022-2023



20,000

Danish-born people living in Skåne



COPENHAGEN AIRPORT

Is the international airport of Denmark and southern Sweden

11,100

Swedish-born people living in Eastern Denmark

EUROPEAN SPALLATION SOURCE

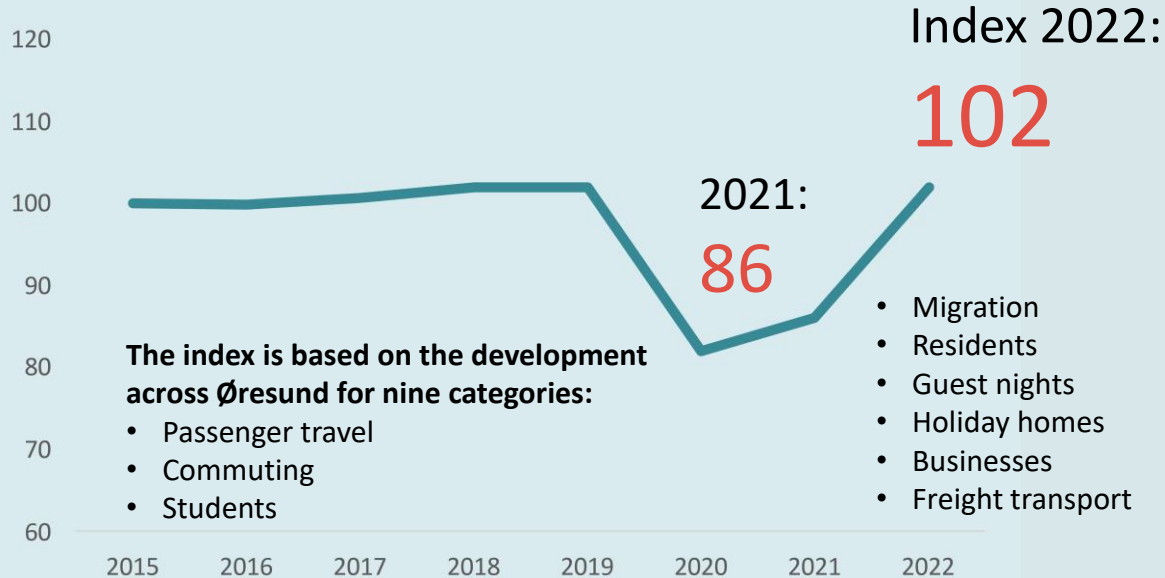
Research facility in Lund with data centre in Copenhagen



THE COUNTRIES ARE INTERTWINED ACROSS THE STRAIT OF ØRESUND

Øresund index - recovery but long term stagnation

Measures integration across the Øresund for nine parameters



1998

Opening of the Great Belt Bridge

2000

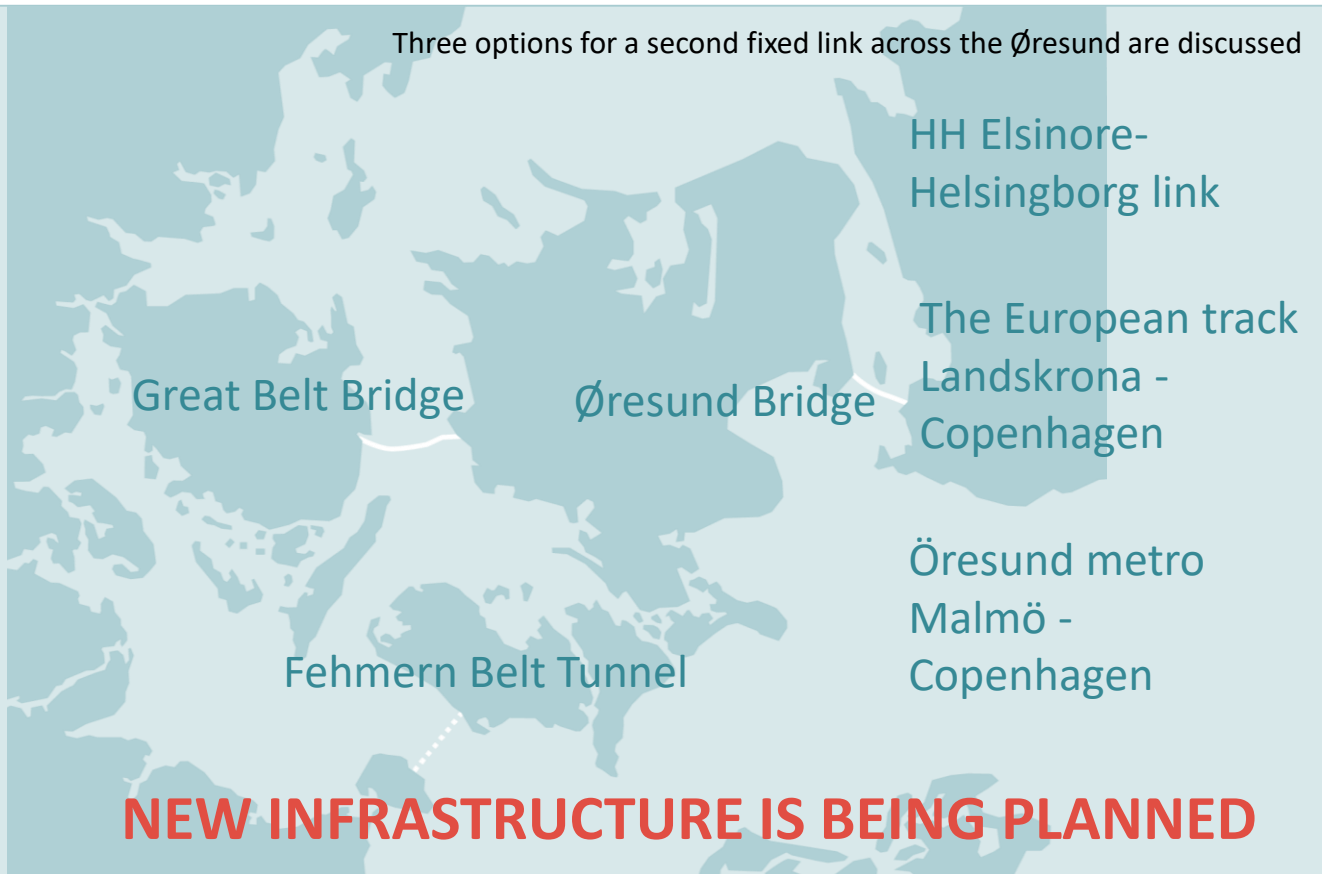
Opening of the Øresund Bridge

2029

Inauguration of the Fehmern Belt Tunnel

Travelling time by train
Copenhagen - Hamburg
is reduced to 2.5 hours

Three options for a second fixed link across the Øresund are discussed



HH Elsinore-
Helsingborg link

The European track
Landskrona -
Copenhagen

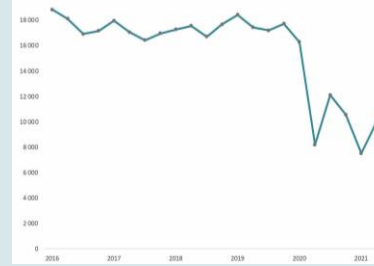
Öresund metro
Malmö -
Copenhagen

NEW INFRASTRUCTURE IS BEING PLANNED



Tax and laws

Different tax systems and labour market laws in Denmark and Sweden



Statistics

Difficulty in producing common statistics for cross-border movements



Currency

Large currency difference between the Danish and Swedish kroner



Border controls

No border controls between the Nordic countries between 1952 and 2015.

FOUR CHALLENGES IN THE BORDER REGION



Øresund as a bottleneck and an opportunity

The Øresund Bridge will bring together freight trains to and from the rest of Europe with regional commuter trains and national and soon international passenger trains

Fehmarn Belt tunnel shifts focus from regional passenger trains to international freight trains



Infrastructure is only a tool

To have a functioning border region, we need:

- Knowledge of each other's countries - analysis and media
- Companies working across the border
- Culture across the border
- Personal contacts
- Curiosity and enthusiasm

It's all about people



Thank you

Johan Wessman
CEO

johan.wessman@oresundsinstittet.org